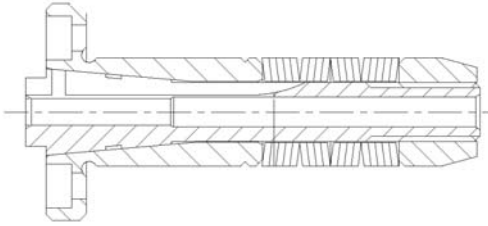


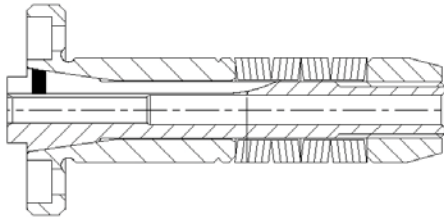


## Westwind Collets

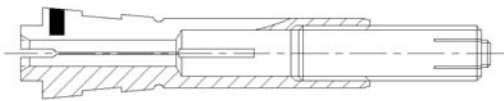
Westwind manufacture and supply spare collets, precision matched to the spindle. Using genuine Westwind collets in your spindles will enhance their performance and extend their working life.



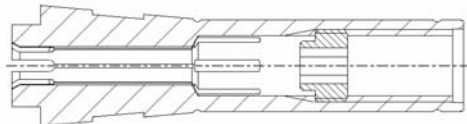
Collet : 08085A1 collet cartridge  
 Type : 1/8" Cartridge  
 Used on : M320-24  
 Tool kit : Not applicable



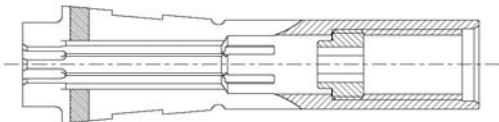
Collet : 11257 collet cartridge  
 Type : 1/8" Cartridge  
 Used on : D1519-01;  
 M320 -01,03,05,07,10,11,16,17,  
 18,19,20,22,23,27,28,29,30,36, 47,52  
 Tool kit : Not applicable



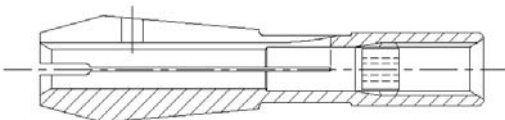
Collet : 16194 rugged  
 Type : 1/8" Positive lock  
 Used on : M320-38,43,55  
 Tool kit : 44429 (6 jaw positive lock)



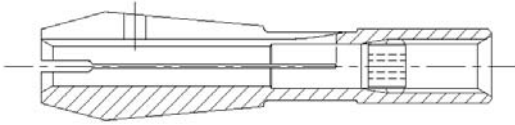
Collet : 16703 rugged  
 Type : 1/8" Dead stop  
 Used on : D1170-04;  
 D1303 -01,02;  
 D1524 -01,02,03,04,05;  
 M320 -46,50,62, 63,64,65,66  
 Tool kit : 48454 (6 jaw dead stop)



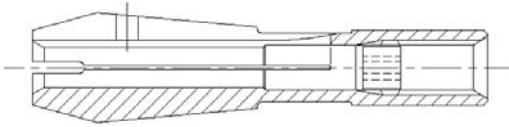
Collet : 17508 rugged  
 Type : 1/8" Positive lock  
 Used on : D1251-03  
 Tool kit : 44429 (6 jaw positive lock)



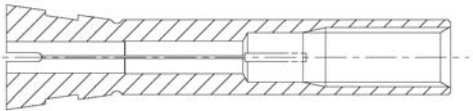
Collet : 17593 standard  
 Type : 1/8" Positive lock  
 Used on : D1201-02,06,20,21,33;  
 D1263 -03,04,06,07,09;  
 D1331 -01,02,03,07,08,09,10,13,  
 17,19,20,21,24,27,28,38;  
 D1404 -01;  
 D1502 -01;  
 D1531 -06,09;  
 D1686 -01,02,03,04  
 Tool kit : 44475 (4 jaw positive lock)



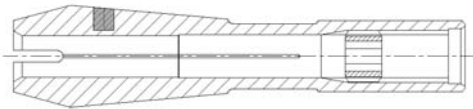
Collet : 17809 standard  
Type : 1/8" Positive lock  
Used on : **D1199**-03,04,05;  
**D1473**-01,05  
Tool kit : 44475 (4 jaw positive lock)



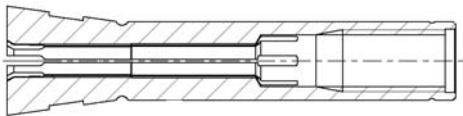
Collet : 17809/2 standard  
Type : 1/8" Positive lock  
Used on : **D1199**-03,04,05;  
**D1473**-01,05  
Tool kit : 44475 (4 jaw positive lock)



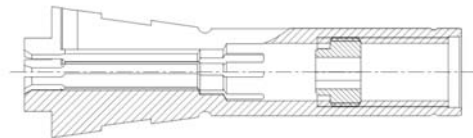
Collet : 34381 rugged  
Type : 1/8" Positive lock  
Used on : **D1331**-26,29,31  
Tool kit : 44429 (6 jaw positive lock)



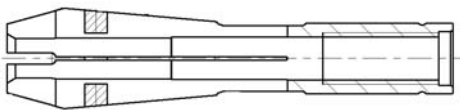
Collet : 37462 standard  
Type : 1/8" Dead stop  
Used on : **D1331**-30,32,41,42,44;  
**D1531**-08  
Tool kit : 44428 (4 jaw dead stop)



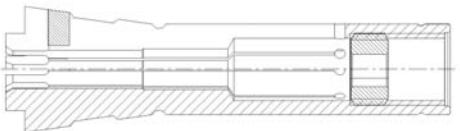
Collet : 38730 rugged  
Type : 1/8" Dead stop  
Used on : **D1331**-36  
Tool kit : 44430 (6 jaw dead stop)



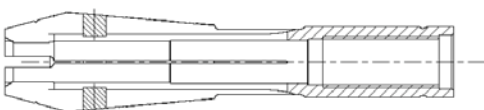
Collet : 39773 rugged  
Type : 1/8" Dead stop  
Used on : **M320**-64C  
Tool kit : 48454 (6 jaw dead stop)



Collet : 40374 standard  
Type : 1/8" Dead stop  
Used on : **D1686**-10,11,12,15  
Tool kit : 44428 (4 jaw dead stop)



Collet : 41611 rugged  
Type : 1/8" Dead stop  
Used on : **D1331**-48, 49, 51  
Tool kit : 48454 (6 jaw dead stop)



Collet : 41844 standard  
Type : 1/8" Dead stop  
Used on : **D1199**-06,10;  
**D1473**-07  
Tool kit : 44428 (4 jaw dead stop)