



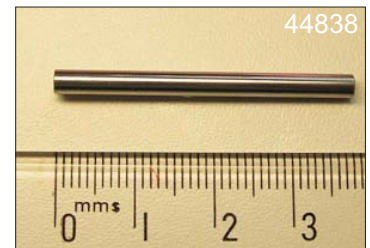
DYNAMIC RUNOUT (DRO) PINS
FOR TESTING WESTWIND SPINDLES

Westwind Air Bearings recommends the use of a Dynamic Runout (DRO) pin to measure DRO accurately. Failure to use the correct DRO pin can result in spindle damage.

Westwind offers three types of pin for DRO measurement:

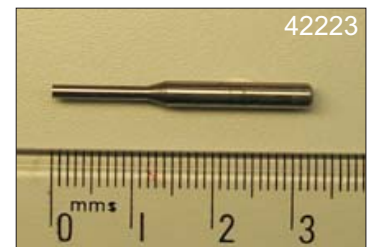
1) Standard 38.1mm pin. Westwind part number 44838.

This pin is used to test DRO on all Westwind spindles, except D1686 (180k rpm), D1733 (250k rpm), D1780 (160k rpm) & D1787 (200k rpm) Westwind spindles - as listed below.



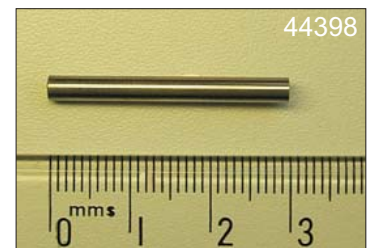
2) Stepped 32.25mm pin. Westwind part number: 42223.

This pin is used to test DRO on all D1686 (180k rpm), D1780 (160k rpm) & D1787 (200k rpm) Westwind spindles only.



3) Standard 30mm pin. Westwind part number 44398.

This pin is used to test DRO on all D1733 (250k rpm) Westwind spindles only.



Please refer to your spindle outline drawing for distance from collet face for pin overhang/probe position. For further information, email support@westwind-airbearings.com.

Updated by Westwind Air Bearings, 1 August 2005

First published: By Westwind Air Bearings, 22 October 2004

Technical Support, Westwind Air Bearings

Holton Road, Holton Heath, Poole, Dorset. BH16 6LN. United Kingdom.

Tel: +44 (0) 1202 627200 Fax: +44 (0) 1202 627208 Email: support@westwind-airbearings.com