

DRAWING No. 39768 - E
 ISSUE THE DRAWING AND DESIGN ARE THE PROPERTY OF WESTWIND AIR BEARINGS. THEY REMAIN AT ALL TIMES THEIR PROPERTY AND MUST NOT BE USED TO THE DETRIMENT OF THEIR INTERESTS.

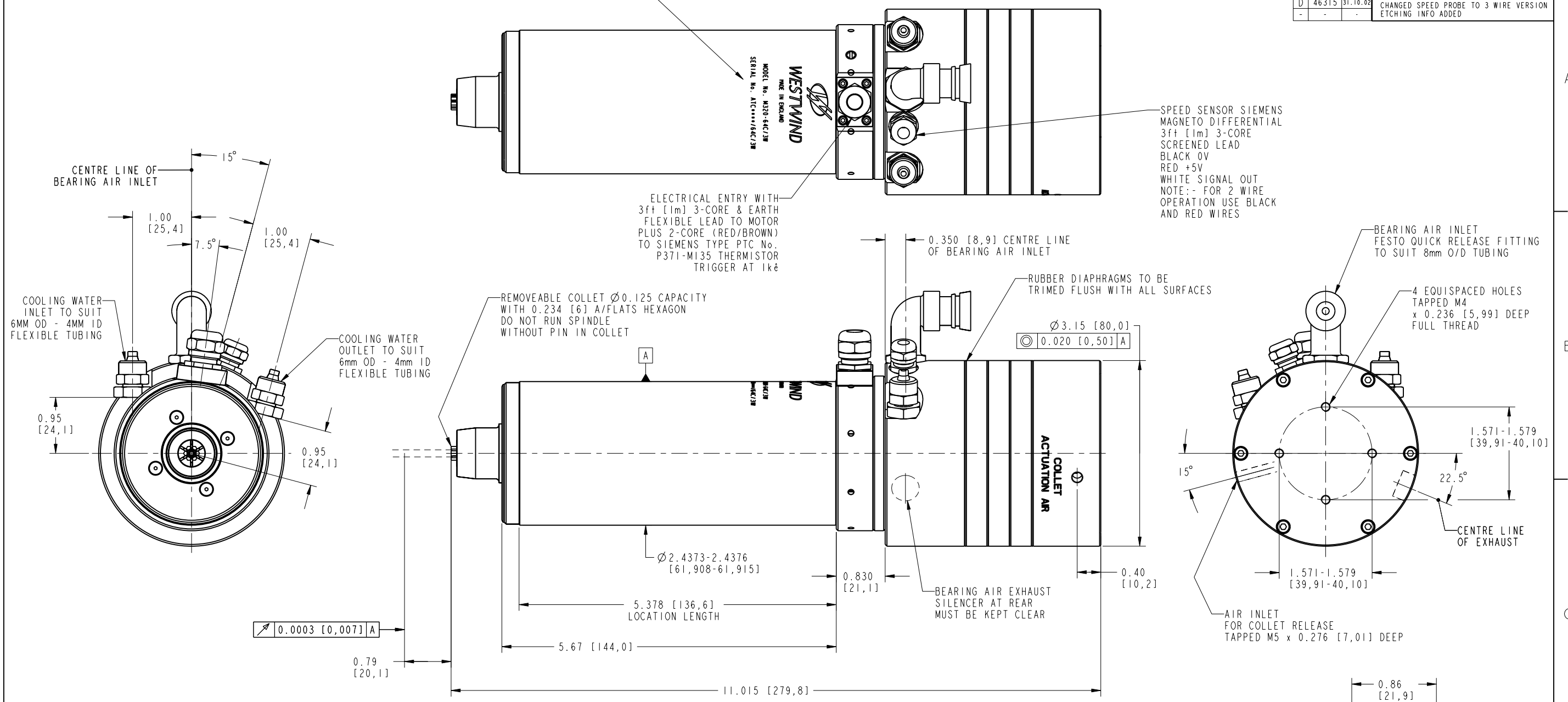
DO NOT SCALE DRAWING

PROJECTION IF IN DOUBT ASK

DO NOT SCALE DRAWING

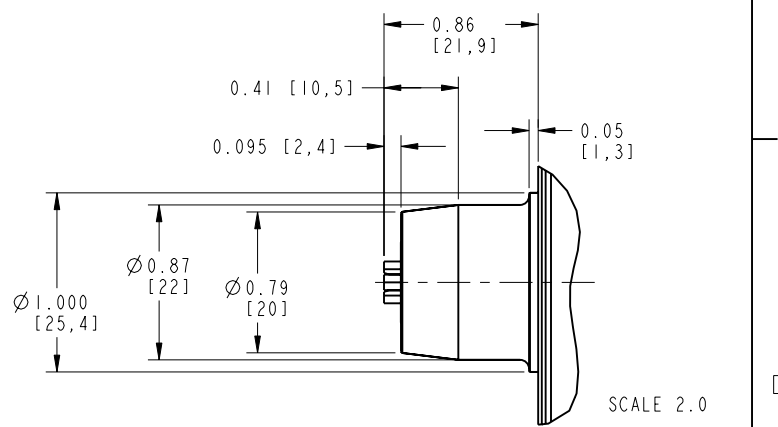
PREVIOUS MODIFICATIONS	MOD No.	DATE	MODIFICATION	ISSUE
	51270	20.10.06		E
B	37533	27.8.99	RE-DRAWN IN INTRALINK	
C	45973	5.8.02	DRAWING NO. WAS 239768	
D	46315	31.10.02	UPDATED DIMENSIONS TO ACTUAL FIGURES	
			CHANGED SPEED PROBE TO 3 WIRE VERSION	
			ETCHING INFO ADDED	

ENSURE THAT 3W IS ADDED TO MODEL AND SERIAL NUMBER



BASIC SPECIFICATION	IMPERIAL UNITS	METRIC UNITS
BEARING AIR SUPPLY PRESSURE	80 P.S.I.G.	5.6 Kg/cm ²
AIR CONSUMPTION	2.5 S.C.F.M.	70.5 Litres/min
COOLING WATER FLOW	11 IMP. GALL/Hr	0.8 Litres/min
COOLING WATER INLET TEMPERATURE	15 - 20 °C	
MAX. HEAT DISSIPATION TO COOLING WATER	1364 BTU/HOUR	400 WATTS
RADIAL FAILURE LOAD AT NOSE (AT 36,000 RPM)	21 lbf	9.5 Kg
AXIAL FAILURE LOAD (PUSH)	41 lbf	18.6 Kg
MAXIMUM SPEED	80,000 RPM	
COLLET ACTUATION PRESSURE	80 P.S.I.G.	5.6 Kg/cm ²
MAXIMUM AXIAL ACCELERATION	15g (DERIVED THEORETICAL MAXIMUM)	
SEE SEPARATE DATA SHEET FOR MOTOR POWER OUTPUT & ELECTRICAL DETAILS		
ADDITIONAL DETAILED INFORMATION IS AVAILABLE ON REQUEST		

39773 - 1/8 COLLET ASSY



GEOMETRIC TOLERANCE SYMBOLS	LIMITS	SIGNED	DATE	TITLE	PRODUCT	DRAWING No.	ISSUE
CHARACTERISTIC SYM CHARACTERISTIC SYM	NOMINAL UNLESS STATED	DRAWN SEF	7.12.98	PROVISIONAL	M320-64C/3W	39768	- E
STRAIGHTNESS \perp CYLINDRICITY \varnothing		CHECKED SEF	7.12.98	OUTLINE			
ROUNDNESS \ominus SQUARENESS \perp		DESIGN APPROVAL DD	7.12.98				
PARALLELISM \parallel CONCENTRICITY \odot		APPLICATION APPROVAL					
ANGULARITY \sphericalangle SYMMETRY \equiv							
RUN OUT ∇ FLATNESS ∇							
TOTAL RUN OUT ∇ POSITION \oplus							

