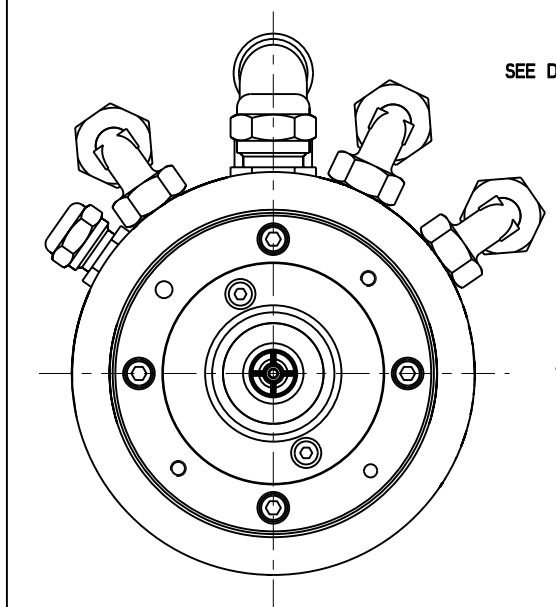
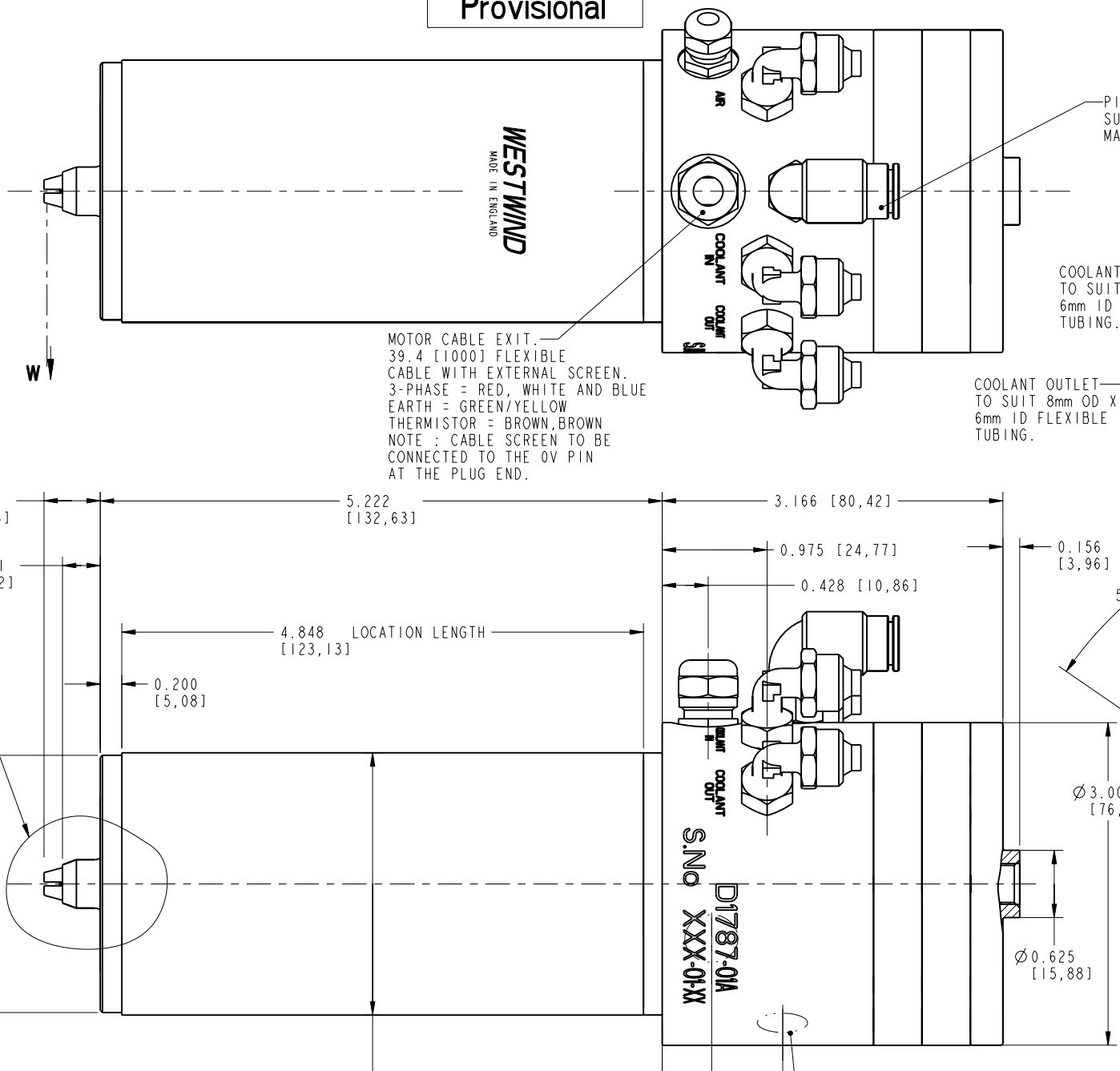


DETAIL X
SCALE 3000

12° TAPER BONDED COLLET FOR 1/8" [3,175] TOOL SHANK. DO NOT RUN SPINDLE WITHOUT A TOOL IN THE COLLET.



BEARING AIR EXHAUST
8 x 2mm RADIAL HOLES
MUST NOT BE OBSTRUCTED.



MOTOR CABLE EXIT.
39.4 [1000] FLEXIBLE CABLE WITH EXTERNAL SCREEN. 3-PHASE = RED, WHITE AND BLUE EARTH = GREEN/YELLOW THERMISTOR = BROWN, BROWN
NOTE : CABLE SCREEN TO BE CONNECTED TO THE OV PIN AT THE PLUG END.

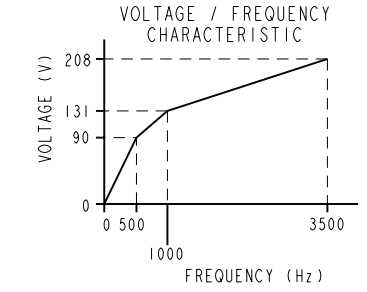
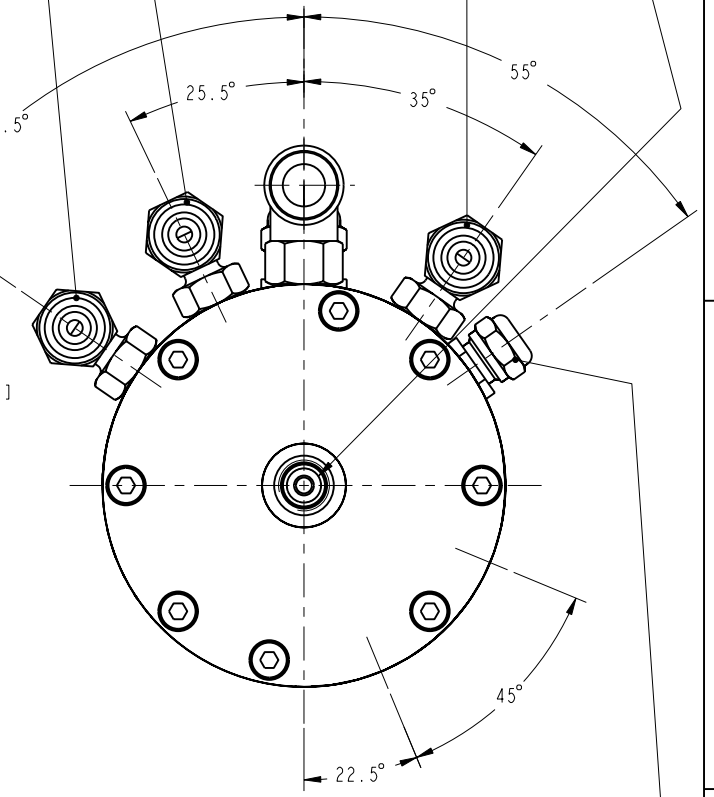
PIPED EXHAUST FITTING TO SUIT 8mm OD X 6mm ID TUBING. MAX PIPE LENGTH = 39.4 [1000].

COOLANT INLET TO SUIT 8mm OD X 6mm ID FLEXIBLE TUBING.

COOLANT OUTLET TO SUIT 8mm OD X 6mm ID FLEXIBLE TUBING.

COLLET ACTUATION AIR INLET TAPPED 1/8" BSP. MUST BE AT ZERO PRESSURE BEFORE AND DURING RUNNING.

BEARING AIR INLET TO SUIT 8mm OD X 6mm ID FLEXIBLE TUBING.



2-OFF 'BLANKED' BEARING AIR EXHAUST SILENCERS (ON OTHER SIDE OF SPINDLE)

SPEED SENSOR CABLE EXIT 39.4 [1000] LONG FLEXIBLE SCREENED CABLE ALPHA XTRA GUARD 86003CY RED = +5V BLACK = 0V WHITE = SIGNAL OUT
NOTE : CABLE SCREEN TO BE CONNECTED TO THE OV PIN AT THE PLUG END.

BASIC SPECIFICATION	IMPERIAL UNITS	METRIC UNITS
BEARING AIR SUPPLY PRESSURE	90 P.S.I.G.	6.33 Kg/cm ²
AIR CONSUMPTION DYNAMIC	1.25 S.C.F.M.	35.4 Litres/min
COOLING WATER FLOW	26.4 IMP. GALL/Hr	2.0 Litres/min
COOLING OIL FLOW	52.8 IMP GAL/Hr	4.0 Litres/min
MAXIMUM HEAT DISSIPATION TO COOLING FLUID	2271 BTU/HOUR	665 WATTS
COOLING FLUID INLET TEMPERATURE	16 - 20 °C	
RADIAL FAILURE LOAD AT W (AT 200,000 RPM)	21 lbf	9.5 Kgf
AXIAL FAILURE LOAD (PUSH)	47 lbf	21.3 Kgf
MAXIMUM OPERATING SPEED	200,000 RPM	
COLLET ACTUATION PRESSURE	90 P.S.I.G.	6.33 Kg/cm ²
MAXIMUM AXIAL ACCELERATION	60g	(DERIVED THEORETICAL MAXIMUM)
ADDITIONAL DETAILED INFORMATION IS AVAILABLE ON REQUEST		

DIMENSIONS IN INCHES, MILLIMETRE EQUIVALENTS IN BRACKETS [---]

GEOMETRIC TOLERANCE SYMBOLS	LIMITS	SIGNED	DATE	TITLE
CHARACTERISTIC SYM CHARACTERISTIC SYM	NOMINAL UNLESS STATED	DRAWN	CJB	16.11.06
STRAIGHTNESS - CYLINDRICITY ⊕		CHECKED	CB	16.11.06
ROUNDNESS ○ SQUARENESS ⊥		DESIGN APPROVAL	RP	16.11.06
PARALLELISM // CONCENTRICITY ⊙		APPLICATION APPROVAL	-	-
ANGULARITY ∠ SYMMETRY ≡		TOTAL RUN OUT Ⓢ POSITION ⊕		

PROVISIONAL
OUTLINE

PRODUCT	D1787-01A	DRAWING No.	48721 - A	ISSUE	A
GSI		WESTWIND®			