

DRAWING No. 45768 - D  
 ISSUE THE DRAWING AND DESIGN ARE THE PROPERTY OF WESTWIND AIR BEARINGS. THEY REMAIN AT ALL TIMES THEIR PROPERTY AND MUST NOT BE USED TO THE DETRIMENT OF THEIR INTERESTS.

DO NOT SCALE DRAWING

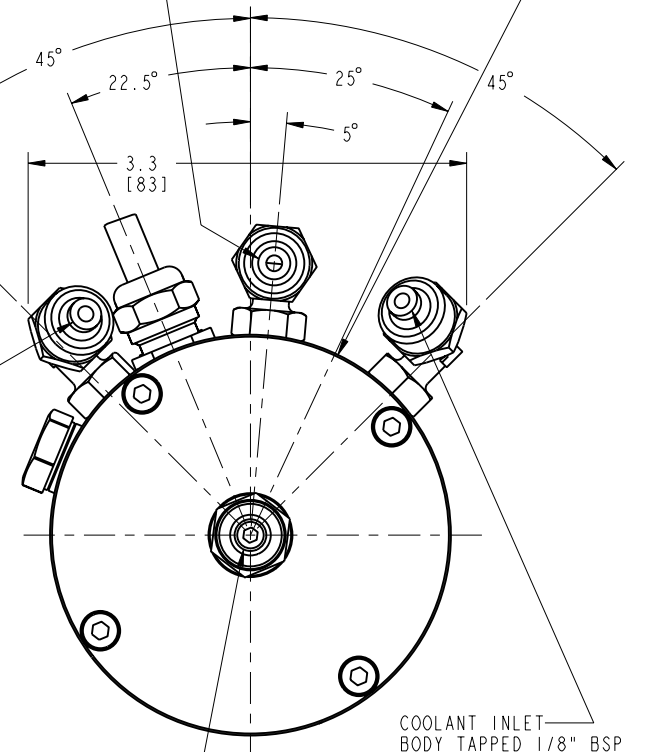
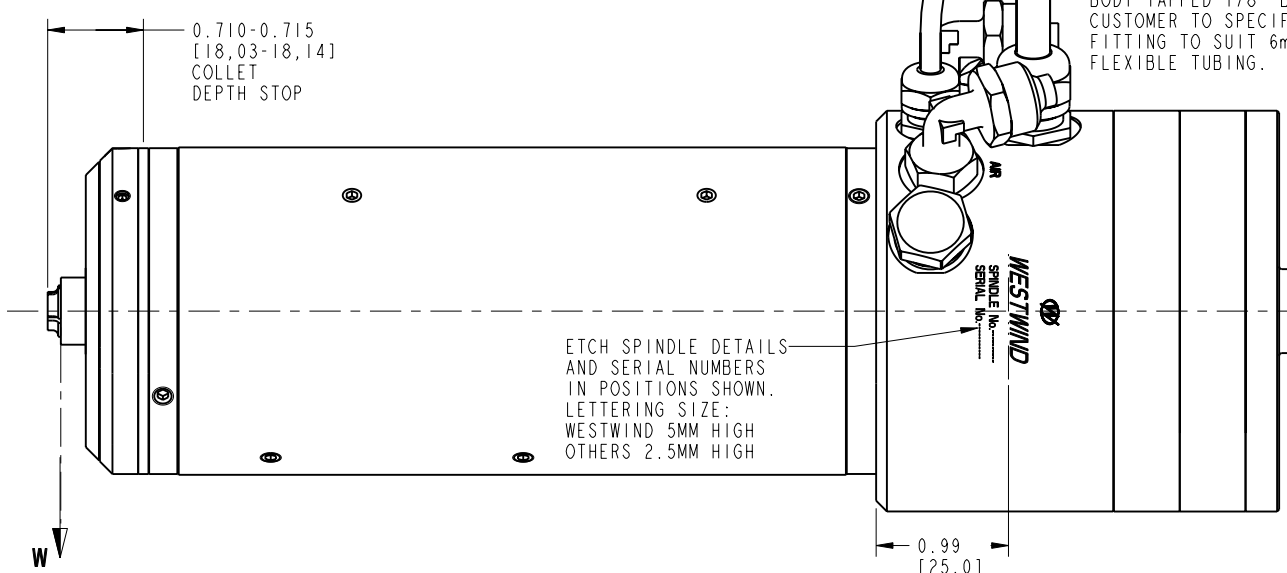
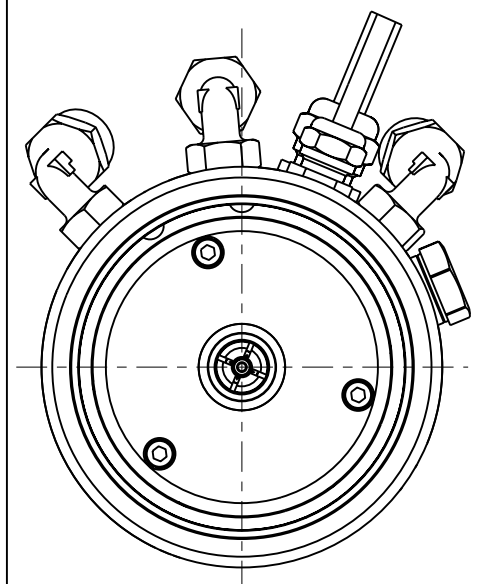
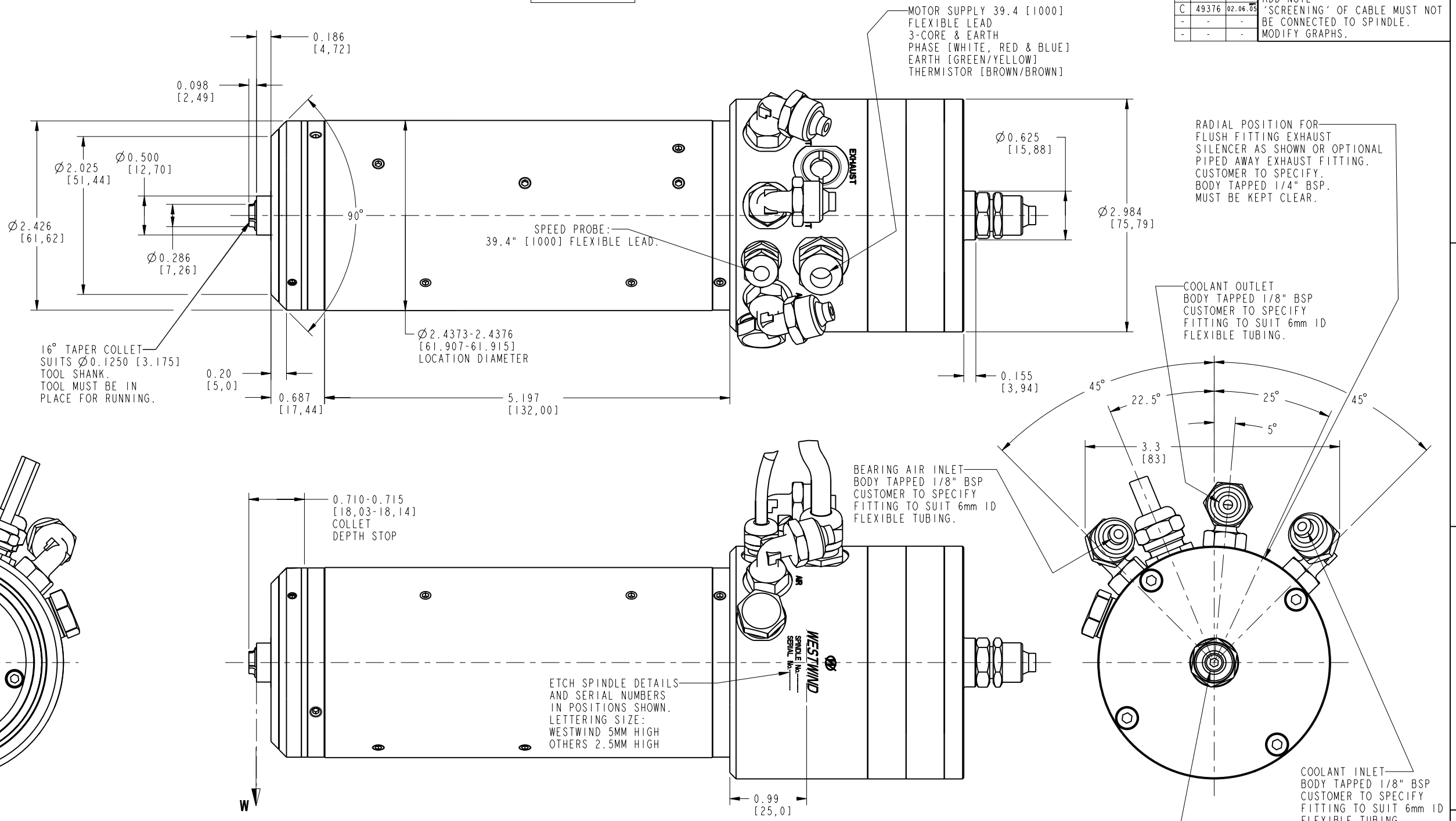
PROJECTION IF IN DOUBT ASK

DO NOT SCALE DRAWING

PREVIOUS MODIFICATIONS	MOD No.	DATE	MODIFICATION	ISSUE
ISS. MOD No.	DATE	50054	09.09.03	D
B 48636	05.03.04	ADD NOTE		
C 49376	02.06.05	'SCREENING' OF CABLE MUST NOT BE CONNECTED TO SPINDLE. MODIFY GRAPHS.		

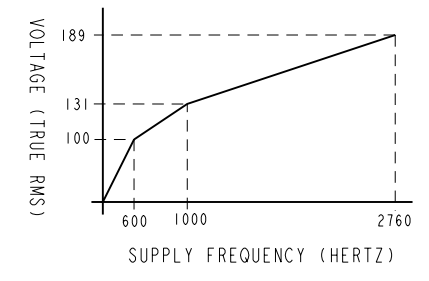
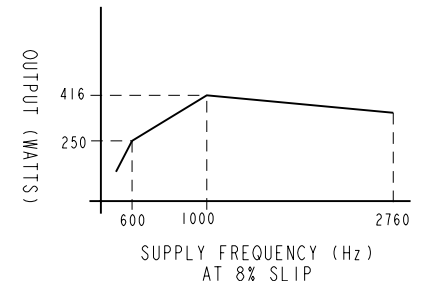
WIRING DETAILS	
FUNCTION	COLOUR
PHASE U	BLUE
PHASE V	WHITE
PHASE W	RED
EARTH	GREEN/YELLOW
SPEED PROBE	BLUE
SCREEN	see note
SPEED PROBE	RED
SPEED PROBE	YELLOW
THERMISTOR	BROWN
THERMISTOR	BROWN

NOTE! 'SCREENING' OF CABLE MUST NOT BE CONNECTED TO SPINDLE.



BASIC SPECIFICATION	IMPERIAL UNITS	METRIC UNITS
BEARING AIR SUPPLY PRESSURE	80 P.S.I.G.	5.6 Kg/cm <sup>2</sup>
AIR CONSUMPTION DYNAMIC	2.6 S.C.F.M.	74 Litres/min
COOLING WATER FLOW	26.3 IMP. GALL/Hr	2 Litres/min
COOLING OIL FLOW	52.6 IMP GAL/Hr	4 Litres/min
MAXIMUM HEAT DISSIPATION TO COOLING FLUID	1530 BTU/HOUR	450 WATTS
COOLING FLUID INLET TEMPERATURE	16 - 20 °C	
RADIAL FAILURE LOAD AT W (AT 20,000 RPM)	15 lbf	6.75 Kg
AXIAL FAILURE LOAD (PUSH)	50 lbf	22.7 Kg
SPEED RANGE	20,000 - 160,000 RPM	
COLLET ACTUATION PRESSURE	80 P.S.I.G.	5.6 Kg/cm <sup>2</sup>
MAXIMUM AXIAL ACCELERATION	45g	(DERIVED THEORETICAL MAXIMUM)

ADDITIONAL DETAILED INFORMATION IS AVAILABLE ON REQUEST



GEOMETRIC TOLERANCE SYMBOLS	LIMITS	SIGNED	DATE	TITLE	PRODUCT	DRAWING No.	ISSUE
CHARACTERISTIC SYM CHARACTERISTIC SYM	NOMINAL UNLESS STATED	DRAWN	N.S.	1.12.03	D1769-03	45768 - D	D
STRAIGHTNESS — CYLINDRICITY		CHECKED	N.S.	1.12.03			
ROUNDNESS  SQUARENESS		DESIGN APPROVAL	JDS	19.12.03			
PARALLELISM  CONCENTRICITY		APPLICATION APPROVAL	--	--			
ANGULARITY  SYMMETRY							
RUN OUT  FLATNESS							
TOTAL RUN OUT  POSITION							